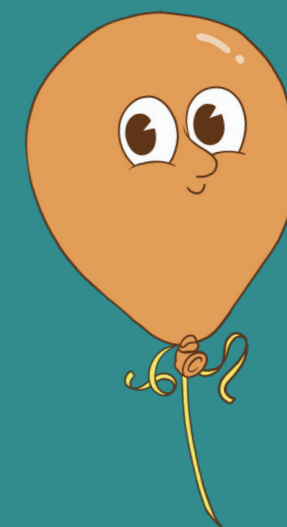


PLONK



HORNIMAN MUSEUM & GARDENS

CHILDREN'S PARTIES



WWW.PLONKGOLF.CO.UK

@PLONKGOLF #PLONKGOLF

PLONK HORNIMAN MUSEUM & GARDENS



9
HOLES

THE COURSE

This glorious 9 hole crazy golf course overlooks the big trees and open green gardens of The Horniman Museum. On top of the beautiful surroundings, the course is perched onto of a hill and has views across London.

The course is accessible by wheelchair and all of the holes are suitable for younger players, but still challenging and rewarding.

The course equipment is regularly cleaned down and the holes are socially distanced.

ANIMAL
WALK



THE MUSEUM & GARDENS

The beautiful and historical Horniman Museum and Gardens is one of the most unique and special institutions in London.

The 16 Acre site houses the historical museum collections of the Horniman family, an Aquarium, an animal walk, Sunken gardens, a butterfly house, a sound garden, cafés, and of course the Plonk mini golf course.

The museum has regularly changing shows and the newest permanent collection 'The World Gallery' reached global acclaim on its opening in 2018.

The Gardens also host weekly farmers markets and events throughout the summer months



AQUARIUM

BUTTERFLY
HOUSE



CRAZY GOLF BIRTHDAY PARTIES

PER GUEST
2 Rounds of Golf
1 Plonk Medal

ADD ONS

Pavillion Hire on Sundays
Lunch Boxes / Catering
Entertainer hire
Butterfly house & Aquarium Tickets
Adult bar for alcoholic & soft drinks
Horniman Museum Party Bags

PAVILION HIRE

AVAILABLE SUNDAYS - £250 2 HOUR HIRE

Next to the Animal Walk and Butterfly House, and within easy reach of the Museum's exhibitions and galleries, the Pavilion is the perfect place for family and friends to have fun.

INCLUDED

Private use of the space
Birthday bunting
Use of PA system to play music
Downloadable party invitations
An event assistant Onsite
(Parental Supervision still required)



THIS COURSE AND VENUE IS FULLY WHEELCHAIR ACCESSIBLE

Please contact our bookings manager to discuss parties, private hire and packages.
info@plonkgolf.co.uk

HOW TO FIND US

PLONK PARTIES

£11

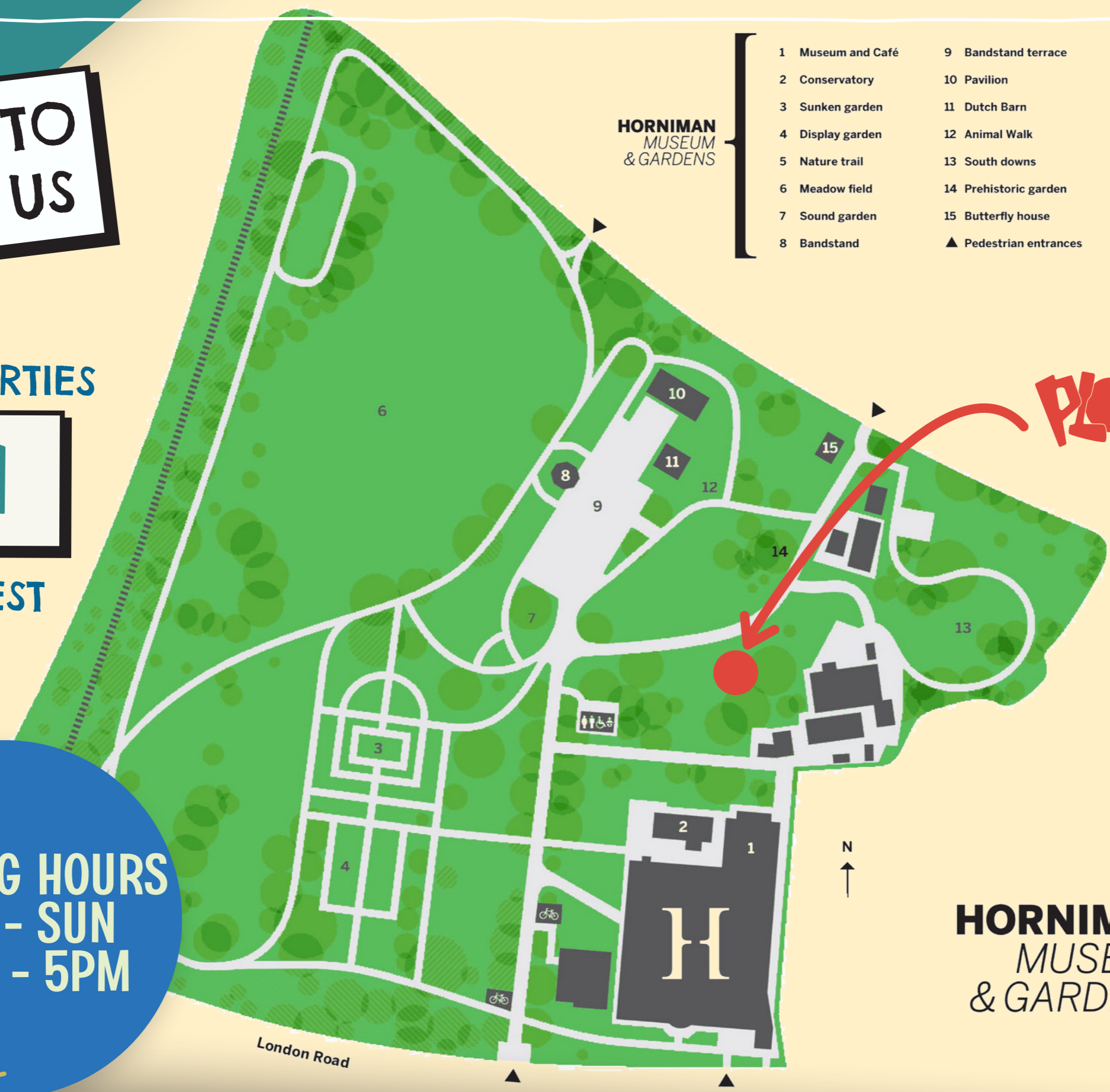
PER GUEST

OPENING HOURS
MON - SUN
10AM - 5PM



WWW.PLONKGOLF.CO.UK

@PLONKGOLF #PLONKGOLF



HORNIMAN
MUSEUM
& GARDENS

- 1 Museum and Café
- 2 Conservatory
- 3 Sunken garden
- 4 Display garden
- 5 Nature trail
- 6 Meadow field
- 7 Sound garden
- 8 Bandstand
- 9 Bandstand terrace
- 10 Pavilion
- 11 Dutch Barn
- 12 Animal Walk
- 13 South downs
- 14 Prehistoric garden
- 15 Butterfly house
- ▲ Pedestrian entrances



HORNIMAN
MUSEUM
& GARDENS

